



Presented by  **LEUPOLD®**

PROGRESSIVE®

JAN. 28 - FEB. 1, 2026

Washington
STATE FAIR
EVENT CENTER

Sponsored by



PLAN YOUR NEXT
**OUTDOOR
ADVENTURE**

SHOW HOURS

Wed–Thur 10 a.m. – 6 p.m.
Fri–Sat 10 a.m. – 7 p.m.
Sunday 10 a.m. – 4 p.m.

  /thesportshows

ADMISSION

Adults..... \$16
Juniors (6-16) \$6
Children 5 & Under FREE
Military* (w/ valid ID) \$8
2-Day Pass \$24

*Proof of ID required to receive discount. Credit card and service fees may apply to both onsite and online sales.

LOOK INSIDE

for show features, exhibitor list, detailed floorplan and daily seminar schedules. For complete show info, go to **WASPORTSMENSSHOW.COM.**

Progressive Casualty Insurance Co. & affiliates. Coverage subject to policy terms and conditions. Prices vary based on how you buy.

It's not truly covered 'til it's filthy. And insured.

Without ATV insurance from Progressive, you could be risking it all the moment you ride off your property. Our policies provide reliable protection and dedicated support so you can keep riding dirty, mile after filthy mile.

1-800-PROGRESSIVE / [PROGRESSIVE.COM/ATV](https://www.progressive.com/atv)

PROGRESSIVE[®]

Quote in
as little as
3 minutes



SHOW ATTRACTIONS



Les Schwab Free Kid's Trout Pond

This iconic show feature, sponsored by Les Schwab Tires, is a favorite for kids 12 and under as hundreds of fat frisky trout are planted to be caught. There are also plenty of honest-to-goodness lunkers to be caught with fish in excess of 20" and even a few tipping the scales at 8 pounds!



Play PLINKO

Year-in and year-out, the Western Washington Toyota Dealers Association brings it with fabulous promotions that result in hundreds of prizes! It's fun and free. Just check-in at the Toyota booth in the Showplex and take your turn on one of the PLINKO games.



Progressive Bucking Bass

The Progressive Bucking Bass is back! Check in at the Progressive booth, climb aboard the "Bucking Bass" and get your picture taken ---- it's FREE for all ages! You'll find them in the Showplex!



3D Archery Challenge

Returns thanks to Dave's Sport Shop and Skookum Archers. There are three divisions this year: Open, Single String and Youth Divisions. There are cash awards to the top three archers in the adult divisions and amazing prizes to the youth winners.



Brett Stoffel

Brett has helped military and civilians survive under impossible odds. When Brett's not in one of his highly informative seminars he's also in the Toyota booth with his survival gear and knowledge to provide one-on-one advice and instruction. You'll find Brett and the Toyota booth in the Showplex.



Mack's Walleye Tank

You'll get to see just how various lures and presentations work in the massive clear glass fishing tank. There's always some pretty nice Columbia River walleye swimming around the tank just for added enjoyment. Special thanks to Mack's Lures for their work in sponsoring this tank.



Batson Fish Fighting Experience

Visit the Batson booth in the Showplex. It's FREE! Take your turn fighting some hard fighting salt and freshwater species ---- it's as close to the real thing as anything you'll find. Batson is the world leader in rod building components so they know a little something about fighting fish!



Indoor Steelhead River

Complete with rocky structure, current seams and current breaks, the "river" includes actual steelhead for good measure. This is where several notable seminar speakers share their steelheading expertise on a variety of techniques and tactics. The Steelhead River is always a "don't miss" opportunity to learn and be entertained.



Head & Horns Competition

In the last two years, back-to-back world records have been recorded! Yours' may be the next! It's \$40 to enter and with that our certified record book measurers will measure your entry and you are automatically entered into the competition and record book if your entry qualifies. Thanks to Benchmark, Danner, Fort Knox Safes, Lacrosse and Leupold.

EXHIBITOR LIST

EXHIBITOR	BOOTH
1STGEN FISHING	706,764
3D ARCHERY REGISTRATION.....	975
365 PATIO FURNITURE	910
5/S OUTFITTING	514
ACTIVE OUTDOORS	706,764
ADDICTED FISHING	467
ADVANCE TECH ORTHOTICS	517
AHTANUM BERRY PATCH & BAKERY	1007
ALASKA KINGFISHERS	526
ALASKA YACHT EXPEDITIONS	931
ALBERTA BOREAL OUTFITTING	1020
ALL-STOR BUILDINGS	14
ALUMAWELD BOATS INC.	650, 652
AMERICAN DELTA PRODUCTS / HUNTER HONER.....	459
ANGLER'S GUIDE SERVICE	524
ANGL-RITE.....	1079
ANTIQUE TACKLE COLLECTORS	TBA
APACHE CAMPING CENTER	8
AXIL.....	945
BAJA PIRATES.....	416
BAJA RANCHEROS OF LA PAZ	1010
BARKLEY SOUND LODGE	1066
BATSON ENTERPRISES.....	143
BB GUN RANGE	966
BC GUIDE OUTFITTERS.....	554
BEAR PAW CHARTERS LLC	558
BEAUMAC ENTERPRISES	606
BECHAROF LODGE FISHING.....	518
BECKMAN NETS.....	706,764
BENCHMADE KNIVES OF OREGON.....	HEAD & HORNS
BEST SEEDLING LLC.....	142
BIG SALMON RESORT/FATHER&SON OUTDOORS.....	420
BITTERROOT MOUNTAIN OUTFITTERS	1048
BLAZE.....	306
BNR BAITS	706,764
BOB'S FREAKIN NUTS	1017
BOWRON RIVER GUIDING	1011
BRAD'S KILLER FISHING GEAR & MAC PROP SAVERS.....	600
BRAVO MANUFACTURING INC.	1099
BRETT STOFFEL/	
EMERGENCY RESPONSE INTERNATIONAL	440
BRIAN SUDDABY SAFARIS AFRICA	354
BROWN'S BAY RESORT	1051
BUCKETCO™	370
BULL'S EYE INDOOR RANGE	901, 905
C&M MARINE INC.....	953
CAL MARINE FISH COMPANY	218
CAMANO ISLAND COFFEE ROASTERS	1046
CAMPFIRE FOODS NW	501
CANNON DOWNRIGGERS	506
CARA'S CORNER COUNTRY STORE.....	445
CASCADE CUSTOM CREATIONS	1027
CASCADIA BBQ SUPPLY	407
CAST ALASKA CHARTERS AND LODGE	500
CEDAR RIVER BOWMEN	1015
CHROME JUNKIES	205
CHIRO ONE WELLNESS	1014

CLACKACRAFT RIVER BOATS	147
CLINTS CUSTOM FISHING TRIPS.....	10
CONCONULLY CHAMBER OF COMMERCE	553
COUNTRY CORNER MARKET - EVERWOOD FURNISHINGS.....	12
CRIMSON RIDGE OUTFITTERS	1078
CRITTER COVE MARINE GROUP INC.....	406
CRUSTACEAN SENSATION BAITING PRODUCTS	456
CUTCO CUTLERY	512
DALL BAY LODGE.....	1018
DANNER INC. / LACROSSE FOOTWEAR.....	453
DAVE BARTHOLET WILDLIFE	1002S
DAVE'S SPORTS SHOP.....	1002
DEFIANCE MARINE.....	130, 135
DELTA WATERFOWL	1029
DINKWE SAFARIS.....	552
DOC WARNERS ALASKA FISHING.....	906
DOUBLE BARREL UPLAND BIRD RANCH	265
DUCKS UNLIMITED WASHINGTON STATE.....	646
EAGLE CHARTERS.....	561
EARLY WINTERS	1073
EAST CAPE SAFARIS	1071
EDGE RODS	256, 259
EDWARD JONES	1070
ELK JUNCTION OUTFITTERS GUIDING	1060
ELYSIAN EDGE CO.	1041
EMERGENCY RESPONSE INTERNATIONAL/	
BRETT STOFFEL.....	440
FAMILY HUNTING CLUB	1036
FANTOM GAME CALLS	154
FISH BARANOF	360
FISH HUNT NORTHWEST	567
FISH INTIMIDATORS LLC	900
FISH NEAH BAY	175
FISH ON SPORTS.....	527
FISH WASHINGTON LLC DBA CATCH ZONE	403
FISH YAKUTAT, LLC.....	1069
FISHERMAN'S GOLD	509
FISHING WITH BIG MIKE.....	1035
FIVE STAR PICKLES & SAUSAGE	971
FORT KNOX SAFES.....	HEAD & HORNS
FREEDOM CHARTERS.....	1076
FROZEN CRITTERS	1098
FW SAFARIS.....	1009
GAMAKATSU USA, INC.....	508
GARLIC GOURMAY/GARLIC EXPRESSIONS.....	656
GENESIS AUTOMOTIVE AND RV REPAIR, INC.	172
GERMAN SHORTHAIRED POINTER CLUB OF WA.....	1081
GET'M DRY FISHING COMPANY.....	404
GHOST SCREAM HOT SAUCE	365
GLACIER BEAR LODGE.....	207
GLOBAL CREDIT UNION	756
GOLD VALLEY LOG HOMES	1044
GOODFELLA'S POWERSPORTS	159
GR8 OUTDOORS	100, 105
GRIZZLY JOE'S SEASONING.....	1028
GRIZZLY KNIVES	954
GRUNDÉNS	660
HAWAIIAN MOON	351
HAXTON'S CANVAS & UPHOLSTERY LLC	543

HEAT IT US LLC.....	409
HERITAGE 1857 COFFEE	904
HEROES ON THE WATER NWEST CHAPTER.....	1062
HOMECO SALES LLC	205, 1013, 1065
HONEYCOMB RAW HONEY.....	13
HOOK'N THEM UP FISHING CHARTERS.....	171
HOTFIRE HUNTING & FISHING SAFARIS	1064
HUMMINGBIRD ELECTRONICS.....	506
HUNT N HONEY	548
HUNTFISHPNW	658
IBEX ROOF LLC.....	758
IDAHO ELK OUTFITTERS	263
IKAMPER USA INC.....	1093
ILIWA SAFARIS	1039
IMAGEWORKS	350
INDUSTRIAL REVOLUTION	1097
INFINITE PRODUCT SOLUTIONS	367
INVISAGIG.....	424
IRON WILL OUTFITTERS.....	1019
ISLAND POINT LODGE	422
JEFF ROBLES AND ASSOCIATES.....	609
JLB INVESTMENTS	153
JOE'S JIGS	216
JOE'S SALMON LODGE	952
JOHN THOMAS ADVENTURES	452
JPH - JOUBERT PRO HUNT.....	363
JUST A LITTLE NUTS.....	924
JW WORLD RESOURCES	369,427,814
KAPTURE	1045
KAWEKA HUNTING ADVENTURES	401
KENLEE JERKY	361
KILLER TENDENCIES LLC	357
KING LASIK K2 VISION	TBA
KOVIX	934
L H FRENCH CO.	506
LACROSSE FOOTWEAR/DANNERINC.....	453
LAMIGLAS INC.....	601
LATEGAN SAFARIS.....	614
LEAFFILTER NORTH LLC	1075
LEISURE SUIT CHARTERS.....	919
LES SCHWAB TIRE CENTERS.....	TROUT POND
LESTER'S AMERICAN MADE MARINE GEAR	556
LEUPOLD & STEVENS INSTRUMENTS INC.	759
LIGHTHOUSE CAVALCADE	655
LITTLE CAPTAINS KOKANEE TACKLE.....	408
LOCHINVAR SAFARIS NEW ZEALAND	951
MACK'S LURE	565, WALLEYE TANK
MAGIC MASSEUSE	425
MAJESTIC EAGLE LODGE.....	413
MAMMOTH OUTFITTERS	1052
MAMMOTH OVERLAND.....	22
MAVEN.....	448
MCOMIE'S CUSTOM LURES.....	806
METANOIA VENTURES	1084
METOLIUS HEMP CO.	621
MIDDLE ISLAND LODGE.....	1040
MILITARY ORDER OF THE PURPLE HEART CHPT. 72.....	206
MINN-KOTA	506
MOR JERKY AND MORE	1058

MULE DEER FOUNDATION	458	PUGET SOUND ANGLERS STATE BOARD	419	THE FALLEN OUTDOORS - TEAM WA	1034
MULE EXPEDITION OUTFITTERS	145	PURE PASSION OUTFITTING	714	THE FUKERY	1025
MUSTAD FISHING AMERICA	763	PUYALLUP CHOCOLATES	152	THE GIVING HUNT	712
NADINA GUIDE OUTFITTERS LTD.	304	QUALICUM RIVERS SALMON FISHING RESORT	1030	THE SUNGLASS GUY INC.	165
NATURE NATES	1024	QUEEN CHARLOTTE LODGE	348	THE SWEETEST THINGS	545
NESKOWIN CREEK RV RESORT / SPR OF OREGON	622	QUICKSILVER KENNELS	1056	TICA USA	618
NILCH'I.COM	949	RANGER SALES	954	TOGIAC RIVER LODGE	616
NISQUALLY RIVER NWTN NATIONAL WILD		RED'S FLY SHOP	812	TOTEM YACHT CLUB	426
TURKEY FEDERATION	1074	REEL APPEAL OCEAN FRONT RESORT LTD.	620	TOXIC CALLS	1022
NOOTKA MARINE ADVENTURES	1004	REEL OBSESSIONS SPORT FISHING	356	TRACT OPTICS	1043
NORTHWEST FISHING / COHO MEDIA	251	REEL TIME FISHING	928	TRADITIONAL BOWHUNTERS OF WASHINGTON	974
NORTHWEST POLE STRUCTURES	619	RICK OLSON HEALTH	418	TRAILER BOSS	5
NORTHWEST SAFE	148	RIDGE TO RIVER OUTDOORS LLC	443	TRAPLINE TAXIDERMY	612
NORTHWEST SHIRT AND SPORTS	936	RIVAL OUTFITTING LTD.	902	TSOKO HUNTING SAFARIS	908
NORTHWEST SPICES	1085	RMEF ROCKY MOUNTAIN ELK FOUNDATION	1032	TUNE OUTDOOR	156
NORTHWEST SPORTSMAN MAGAZINE	352	ROCKY POINT RESORT	371	TURMANATOR TRAILER & IRONWORKS	13
NORTHWEST TENT COMPANY, LLC	939	RODFATHER CHARTERS	1042	TWISTED WATERS GUIDE SERVICE	604
NORTHWESTERN OUTDOORS RADIO	358	RODS AND REELS IN NEED	1012	TX OUTFITTERS	1061
NRA NATIONAL RIFLE ASSOCIATION/		RUGGED MAPS	1037	UDELL'S GUIDING & OUTFITTING	1038
SHOWS & EXHIBITS DEPT.	410	RUGER FIREARMS	HEAD & HORNS	UNCLE JIM'S SMOKEHOUSE INC.	757
NW MOUNTAIN CHALLENGE	461	ROGUE LIMITED	FD-3	USCG - U.S. COAST GUARD RECRUITING	
OFF THE WALL BEAUTY PRODUCTS	909	ROSEDALE SAFARIS	1031	OFFICE TUKWILA WA RECRUITING	564
OFFSHORE SOLUTIONS/JOHNSON CHAMBERED BOATS ...	1302	RUSS FIELD SAFARIS	402	VALLEY RV SUPERCENTER	2
OKANOGAN VALLEY GUIDE SERVICE	1006	SAFARI CLUB INTERNATIONAL	1095	VAUGHN BAY CUSTOMS	1300
OKUMA	706,764	SAFARI LAND HUNTING OUTFITTERS	947	VERLE'S SPORTS CENTER & MARINE	640,840,841,FD4
OLD SCHOOL GUN SCHOOL	168	SAFE WADERS LLC	502	VETERANS OF FOREIGN WARS DEPT OF WASHINGTON	164
OMG OLIVE OILS & VINEGARS	167	SALISH BOAT COMPANY	1310	VILLA DEL PALMAR	369
OROS	173	SCENTRAX	445	WARNE MANUFACTURING COMPANY	563
OSPREY GLOBAL SCOPES	1067	SCOTTY MANUFACTURING	503	WASHINGTON DEPARTMENT OF FISH AND WILDLIFE	550
OUTDOOR EMPORIUM	863,870	SEA MARINE/WESTSIDE MARINE	1320	WASHINGTON STATE BASS FEDERATION	559
OUTLANDER CHARTERS	624	SEATTLE FISHING COMPANY	267	WASHINGTON STATE YOUTH CONSERVATION CAMPS	1083
OWNER HOOKS	706,764	SEATTLE-TACOMA GERMAN WIREHAired POINTER CLUB..	1090	WASHINGTON WATERFOWL ASSOCIATION	713
PACIFIC CUSTOM CALLS LLC	925	SEAWALKER CHARTERS	460	WASHINGTONIANs FOR WILDLIFE CONSERVATION	368
PACIFIC FIN CHARTERS	571	SILENCER CENTRAL	1054	WATERS EDGE LODGE	560
PACIFIC NORTHWEST GORDON SETTER CLUB	1088	SKONE RANCH OUTFITTERS	930	WEB STEEL BUILDINGS NORTHWEST, LLC	520
PACIFIC SALMON CHARTERS	516	SKOOKUM ARCHERS CLUB AND RANGE	975	WEEKEND SAVER	546
PACIFIC STATES MARINE FISHERIES COMMISSION	549	SMITH BROTHERS	625	WESTCOAST FISHING TACKLE	664
PATHFINDER SPORT FISHING	1080	SNAP IT HOT	269	WESTERN CASE	151
PAUTZKE BAIT	706,764	SNIPER BLADEWORKS	954	WESTERN FILAMENT	603
PHEASANTS FOREVER	1047	SOUND TO SEA CHARTERS	359	WESTERN WASHINGTON TOYOTA DEALERS	440
PIERCE COUNTY SHERIFF'S DEPARTMENT	973	SOUTH HILL RV SALES INC.	15	WESTERN WASHINGTON WALLEYE CLUB	444
P-LINE	706,764	SOUTH SOUND BIRD DOG CLUB	1089	WHO DAT TOWERS	417
PLINKO/WESTERN WASHINGTON TOYOTA DEALERS... 440		SPIKA USA	956	WILCO FARM STORE	1049
PNW BOATS	1000	SPORTCO WAREHOUSE	700,807	WILD TV INC.	1021
PNW INTERNATIONAL INC.	163	SPOT LLC	1016	WILDERNESS MINT	203
PNW LIFESTYLE	903	SQUATCH JUICE LLC	411	WILLOW AIR	1057
PNW SYNTHETICS	307	STACKING BODIES CUSTOM	446	WINNING WAYS LLC	1082
PNWILD	932	STAR BLINK PRODUCTS INC.	657	WINTER HARBOUR OCEAN ADVENTURES INC.	219
PRECISION FLY AND TACKLE	305	STAR-BATT	1053	WOLVERINE RANGE OUTFITTERS LTD.	345
PERIL SKY	FD-1	STEEL AND STONE	1086	WOOLDRIDGE BOATS INC.	654
PROGRESSIVE INSURANCE	253	STRYKER RODS	256, 259	WSMA WA STATE MUZZLELOADER'S ASSOCIATION	1077
PROLITE ROD TECHNOLOGY	343	SWEETWATER TINY STRUCTURES	450	YAKIMA BAIT	706,764
PRO-TROLL INC.	663	TACOMA BOAT SALES & SERVICE	643	YES BAY LODGE	946
PSLRA PUGET SOUND LABRADOR RETRIEVER ASSOC	1087	TACOMA SPORTSMEN'S CLUB	TROUT POND	ZERO GUIDE FEES	921
PSRFE PUGET SOUND RECREATIONAL		TACRIG	201	ZEROFIT USA	400
FISHERIES ENHANCEMENT	519	TALON RODS	463	ZOMBIE IRON	457
PUCCI	706,764	TEAM ROOFING NW	938		
PUDDING RIVER WOOD CARVING STUDIO	644	TEXAN KNIVES	611		
PURE FISHING	609	THE BLACKTAIL COACH	1050		
PUGET MARINA	13,051,306	THE BLACKTAIL COMPANY	521		

The Exhibitor List is subject to change. Every effort has been made to ensure accuracy until and through press time. Last-minute changes or additions are at the show office. Show admission refunds will not be granted due to a change in listing.



Scan the QR code to the left with your smartphone to view our searchable online Exhibitor List.

FLOOR PLAN & SHOW ATTRACTIONS

  /thesportshows

The floor plan is subject to change. Every effort has been made to ensure accuracy until and through press time. Last-minute changes or additions are at the show office. Show admission refunds will not be granted due to a change in listing.



INDOOR STEELHEAD RIVER Showplex



Tires LES SCHWAB

FREE

KID'S TROUT POND

Mack's LURE WALLEYE TANK

PUGET MARINA 1305

PUGET MARINA 1306

1304

OFFSHORE SOLUTIONS/JONAS CHARTERED BOATS 1302

VAUGHN BAY CUSTOMS 1300

SALISH BOAT COMPANY 1310

SEA MARINE WESTSIDE MARINE 1320

CENTENNIAL

13

1

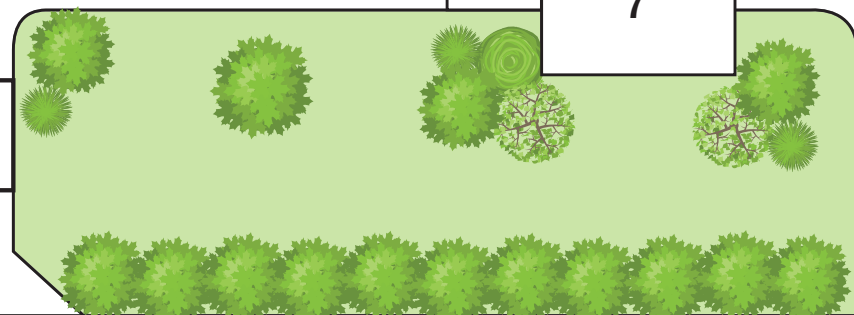


BLUE GATE ENTRANCE

TICKETS

VALLEY RV SUPERCENTER 2





SCONE CONCESSIONS

TRAILER BOSS 5

APACHE CAMPING CENTER 8

6

7

PAVILION 1ST LEVEL

PAVILION 2ND LEVEL

SHOW OFFICE



BLUE FISHING THEATER

DEFIANCE MARINE 135

BEST SEEDLING 142

BATSON ENTERPRISES 143

MULE EXPEDITION OUTFITTERS 145

NORTHWEST SAFE COMPANY 148

CLACKWASSET RIVER BOATS 147

152 219

151 218

153 216

154 216

251

PROGRESSIVE 253

TUNE OUTDOOR 156

EDGE RODS 256

EDGE RODS 259

356 413

357 411

358 411

359 410

360 410

361 409

163 207

164 206

165 205

263 307

306 306

265 305

363 408

364 407

365 406

367 404

368 403

369 402

370 401

371 400

427 527

426 526

443 527

444 526

445 524

446 524

422

448 521

450 520

452 518

453 517

454 516

543 HAXTONS LURES 543

545 625

546 624

548 622

549 621

550 620

552 618

553 616

554 616

556 614

557 612

558 612

559 611

560 609

561 609

563 714

564 713

565 712

566 712

567 713

568 712

569 712

570 712

571 712

572 712

573 712

574 712

575 712

576 712

577 712

578 712

579 712

580 712

581 712

582 712

583 712

584 712

585 712

586 712

587 712

588 712

589 712

590 712

591 712

592 712

593 712

594 712

595 712

596 712

597 712

598 712

599 712

600 712

601 712

602 712

603 712

604 712

605 712

606 712

607 712

608 712

609 712

610 712

611 712

612 712

613 712

614 712

615 712

616 712

617 712

618 712

619 712

620 712

621 712

622 712

623 712

624 712

625 712

626 712

627 712

628 712

629 712

630 712

631 712

632 712

633 712

634 712

635 712

636 712

637 712

638 712

639 712

640 712

641 712

642 712

643 712

644 712

645 712

646 712

647 712

648 712

649 712

650 712

651 712

652 712

653 712

654 712

655 712

656 712

657 712

658 712

659 712

660 712

661 712

662 712

663 712

664 712

665 712

666 712

667 712

668 712

669 712

670 712

671 712

672 712

673 712

674 712

675 712

676 712

677 712

678 712

679 712

680 712

681 712

682 712

683 712

684 712

685 712

686 712

687 712

688 712

689 712

690 712

691 712

692 712

693 712

694 712

695 712

696 712

697 712

698 712

699 712

700 712

701 712

702 712

703 712

704 712

705 712

706 712

707 712

708 712

709 712

710 712

711 712

712 712

713 712

714 712

715 712

716 712

717 712

718 712

719 712

720 712

721 712

722 712

723 712

724 712

725 712

726 712

727 712

728 712

729 712

730 712

731 712

732 712

733 712

734 712

735 712

736 712

737 712

738 712

739 712

740 712

741 712

742 712

743 712

744 712

745 712

746 712

747 712

748 712

749 712

750 712

751 712

752 712

753 712

754 712

755 712

756 712

757 712

758 712

759 712

760 712

761 712

762 712

763 712

764 712

765 712

766 712

767 712

768 712

769 712

770 712

771 712

772 712

773 712

774 712

775 712

776 712

777 712

778 712

779 712

780 712

781 712

782 712

783 712

784 712

785 712

786 712

787 712

788 712

789 712

790 712

791 712

792 712

793 712

794 712

795 712

796 712

797 712

798 712

799 712

800 712

801 712

802 712

803 712

804 712

805 712

806 712

807 712

808 712

809 712

810 712

811 712

812 712

813 712

814 712

815 712

816 712

817 712

818 712

819 712

820 712

821 712

822 712

823 712

824 712

825 712

826 712

827 712

828 712

829 712

830 712

831 712

832 712

833 712

834 712

835 712

836 712

837 712

838 712

839 712

840 712

841 712

842 712

843 712

844 712

845 712

846 712

847 712

848 712

849 712

850 712

851 712

852 712

853 712

854 712

855 712

856 712

857 712

858 712

859 712

860 712

861 712

862 712

863 712

864 712

865 712

866 712

867 712

868 712

869 712

870 712

871 712

872 712

873 712

874 712

875 712

876 712

877 712

878 712

879 712

880 712

881 712

882 712

883 712

884 712

885 712

886 712

887 712

888 712

889 712

890 712

891 712

892 712

893 712

894 712

895 712

896 712

897 712

898 712

899 712

900 712

901 712

902 712

903 712

904 712

905 712

906 712

907 712

908 712

909 712

910 712

911 712

912 712

913 712

914 712

915 712

916 712

917 712

918 712

919 712

920 712

921 712

922 712

923 712

924 712

925 712

926 712

927 712

928 712

929 712

930 712

931 712

932 712

933 712

934 712

935 712

936 712

937 712

938 712

939 712

940 712

941 712

942 712

943 712

944 712

945 712

946 712

947 712

948 712

949 712

950 712

951 712

952 712

953 712

954 712

955 712

956 712

957 712

958 712

959 712

960 712

961 712

962 712

963 712

964 712

965 712

966 712

967 712

968 712

969 712

970 712

971 712

972 712

973 712

974 712

975 712

976 712

977 712

978 712

979 712

980 712

981 712

982 712

983 712

984 712

985 712

986 712

987 712

988 712

989 712

990 712

991 712

992 712

993 712

994 712

995 712

996 712

997 712

998 712

999 712

1000 712

1001 712

1002 712

1003 712

1004 712

1005 712

1006 712

1007 712

1008 712

1009 712

1010 712

1011 712

1012 712

1013 712

1014 712

1015 712

1016 712

1017 712

1018 712

1019 712

1020 712

1021 712

1022 712

1023 712

1024 712

1025 712

1026 712

1027 712

1028 712

1029 712

1030 712

1031 712

1032 712

1033 712

1034 712

1035 712

1036 712

1037 712

1038 712

1039 712

1040 712

1041 712

1042 712

1043 712

1044 712

1045 712

1046 712

1047 712

1048 712

1049 712

1050 712

1051 712

1052 712

1053 712

1054 712

1055 712

1056 712

1057 712

1058 712

1059 712

1060 712

1061 712

1062 712

1063 712

1064 712

1065 712

1066 712

1067 712

1068 712

1069 712

1070 712

1071 712

1072 712

1073 712

1074 712

1075 712

1076 712

1077 712

1078 712

1079 712

1080 712

1081 712

1082 712

1083 712

1084 712

1085 712

1086 712

1087 712

1088 712

1089 712

1090 712

1091 712

1092 712

1093 712

1094 712

1095 712

1096 712

1097 712

1098 712

1099 712

1100 712

1101 712

1102 712

1103 712

1104 712

1105 712

1106 712

1107 712

1108 712

1109 712

1110 712

1111 712

1112 712

1113 712

1114 712

1115 712

1116 712

1117 712

1118 712

1119 712

1120 712

1121 712

1122 712

1123 712

1124 712

1125 712

1126 712

1127 712

1128 712

1129 712

1130 712

1131 712

1132 712

1133 712

1134 712

1135 712

1136 712

1137 712

1138 712

1139 712

1140 712

1141 712

1142 712

1143 712

1144 712

1145 712

1146 712

1147 712

1148 712

1149 712

1150 712

1151 712

1152 712

1153 712

1154 712

1155 712

1156 712

1157 712

1158 712

1159 712

1160 712

1161 712

1162 712

1163 712

1164 712

1165 712

1166 712

1167 712

1168 712

1169 712

1170 712

1171 712

1172 712

1173 712

1174 712

1175 712

1176 712

1177 712

1178 712

1179 712

1180 712

1181 712

1182 712

1183 712

1184 712

1185 712

1186 712

1187 712

1188 712

1189 712

1190 712

1191 712

1192 712

1193 712

1194 712

1195 712

1196 712

1197 712

1198 712

1199 712

1200 712

1201 712

1202 712

1203 712

1204 712

1205 712

1206 712

1207 712

1208 712

1209 712

1210 712

1211 712

1212 712

1213 712

1214 712

1215 712

1216 712

1217 712

1218 712

1219 712

1220 712

1221 712

1222 712

1223 712

1224 712

1225 712

1226 712

1227 712

1228 712

1229 712

1230 712

1231 712

1232 712

1233 712

1234 712

1235 712

1236 712

1237 712

1238 712

1239 712

1240 712

1241 712

1242 712

1243 712

1244 712

1245 712

1246 712

1247 712

1248 712

1249 712

1250 712

1251 712

1252 712

1253 712

1254 712

1255 712

1256 712

1257 712

1258 712

1259 712

1260 712

1261 712

1262 712

1263 712

1264 712

1265 712

1266 712

1267 712

1268 712

1269 712

1270 712

1271 712

1272 712

1273 712

1274 712

1275 712

1276 712

1277 712

1278 712

1279 712

1280 712

1281 712

1282 712

1283 712

1284 712

1285 712

1286 712

1287 712

1288 712

1289 712

1290 712

1291 712

1292 712

1293 712

1294 712

1295 712

1296 712

1297 712

1298 712

1299 712

1300 712

1301 712

1302 712

1303 712

1304 712

1305 712

1306 712

1307 712

1308 712

1309 712

1310 712

1311 712

1312 712

1313 712

1314 712

1315 712

1316 712

1317 712

1318 712

1319 712

1320 712

1321 712

1322 712

1323 712

1324 712

1325 712

1326 712

1327 712

1328 712

1329 712

1330 712

1331 712

1332 712

1333 712

1334 712

1335 712

1336 712

1337 712

1338 712

1339 712

1340 712

1341 712

1342 712

1343 712

1344 712

1345 712

1346 712

1347 712

1348 712

1349 712

1350 712

1351 712

1352 712

1353 712

1354 712

1355 712

1356 712

1357 712

1358 712

1359 712

1360 712

1361 712

1362 712

1363 712

1364 712

1365 712

1366 712

1367 712

1368 712

1369 712

1370 712

1371 712

1372 712

1373 712

1374 712

1375 712

1376 712

1377 712

1378 712

1379 712

1380 712

1381 712

1382 712

1383 712

1384 712

1385 712

1386 712

1387 712

1388 7

BLUE FISHING THEATER

WEDNESDAY

12:00 PM	Batson Enterprises	Surf Fishing The Olympic Peninsula
1:00 PM	Doug St. Denis	Puget Sound Salmon - Summer Chinook
2:00 PM	Marc Bush	Walleye Fishing Basics - Where, When and How
3:00 PM	Robert Kratzer	Plug Fishing 101
4:00 PM	Brianna Bruce	Sockeye 101

THURSDAY

12:00 PM	Toby Wyatt	How And When To Safely Fish Baja Mexico
1:00 PM	Duane Inglin	Drift Fishing vs Bobber Doggin'...Know The Difference
2:00 PM	Jason Noorlander	Puget Sound Squid Fishing
3:00 PM	Scott Kaul	Getting The Most Out Of Your Super Baits
4:00 PM	Batson Enterprises	The Custom Rod Difference . . . Tailored Actions For Success

FRIDAY

11:00 AM	Pete Fisher	Targeting Western Washington Trout & Beyond
12:00 PM	Batson Enterprises	Spiral Wrapping Guides For PNW Fisheries - Expert Advice For Custom Rod Building
1:00 PM	Cameron Black	Tips, Tactics and Techniques For Fishing 360 Flashers
2:00 PM	Toby Wyatt	Dworshak Smallmouth
3:00 PM	Bill Herzog	Twitching Jigs For Big Trout
4:00 PM	Jim Davis	Jigging For Walleye

SATURDAY

11:00 AM	Jacob Perry	Pro Tactics For Spring And Summer Columbia River Walleye
12:00 PM	Doug St. Denis	Western Washington Bass Fishing + Doug's Top 10 Western Washington Bass Lakes
1:00 PM	Eric Winther	How, When and Where: Catching Northern Pikeminnow For Big Bucks
3:00 PM	Jarod Higginbotham Shane Magnuson	Stuffer Baits Tips & Tricks
4:00 PM	Batson Enterprises	Fixing Broken Fishing Rods - Advice From The World Experts In Custom Rods

SUNDAY

11:00 AM	John Kruse	Cast and Blast Destinations Around The Northwest
12:00 PM	Batson Enterprises	The Story of Batson Enterprises - Global Leaders In Custom Rod Building
1:00 PM	Jason Noordlander	Nearshore and Offshore Bottom Fish
2:00 PM	Red's Fly Shop	DIY Fly Fishing The Yakima Canyon: Tactics For Every Angler

GREEN HUNTING THEATER

WEDNESDAY

1:00 PM	Red's Fly Shop	Cast and Blast in Washington State
2:00 PM	David Riley	Five Factors For More Deer Encounters
3:00 PM	Brett Stoffel	Surviving a Wilderness Emergency
4:00 PM	Heather Aldrich	Fall Bear Hunting Tactics

THURSDAY

1:00 PM	Red's Fly Shop	Upland Hunting Essentials
2:00 PM	Brett Stoffel	Myths and Misconceptions in Survival
3:00 PM	Justin Grimm	Talking Turkey 101
4:00 PM	Richy Harrod	Mule Deer Hunting on Public Land

FRIDAY

1:00 PM	Heather Aldrich	Fall Bear Hunting Tactics
2:00 PM	Brett Stoffel	Basic Survival For Hunters
3:00 PM	David Riley	Five Factors For More Deer Encounters
4:00 PM	Red's Fly Shop	The Anatomy of the Successful Upland Hunt: Wind, Dogs, Pressure & Strategy

SATURDAY

12:00 PM	David Riley	Five Factors For More Deer Encounters
1:00 PM	Richy Harrod	Using Tech in the Field
2:00 PM	Brett Stoffel	Surviving a Wilderness Emergency
3:00 PM	Red's Fly Shop	Upland 101: A Beginner-Friendly Guide to Getting Started
4:00 PM	Justin Grimm	Talking Turkey 101

SUNDAY

11:00 AM	Red's Fly Shop	Fall in the Yakima Canyon: The Season of the Cast & Blast
12:00 PM	Richy Harrod	Do-It-Yourself Backcountry Hunting
1:00 PM	Brett Stoffel	What to do When You're Lost

VIEW THE SCHEDULE ON YOUR PHONE

For the most up-to-date seminar schedule, visit wasportsmensshow.com/show-features/seminar-schedule or scan the QR code on the right.



MACK'S LURE WALLEYE TANK

Presented by 

WEDNESDAY

1:30 PM Shelby Ross Walleye Fishing Basics
3:00 PM Eric Magnuson Washington Ice Fishing: Lakes, How To Locate Fish on Hard Water

THURSDAY

12:30 PM Jim Davis Vertical Jigging Tackle and Tactics
1:30 PM Richy Harrod Destination Kokanee Fisheries
2:30 PM Shelby Ross Spring Walleye Techniques

FRIDAY

1:30 PM Richy Harrod Tips for Catching Kokanee At All Times of the Year
2:30 PM Jaime Rodriguez Walleye Tactics: Bait Presentations That Catch More Walleye
3:30 PM Eric Magnuson Ice Fishing: Introduction To Hard Water Fishing

SATURDAY

11:00 AM Jim Davis Vertical Jigging Tackle and Tactics
1:00 PM Brianna Bruce Active Trout Fishing
3:30 PM Eric Magnuson Fishing Out of a Bucket

SUNDAY

12:30 PM Shelby Ross Tips For Catching More Walleye
1:30 PM Brianna Bruce Active Trout Fishing

INDOOR STEELHEAD RIVER

WEDNESDAY

12:00 PM Oros Rethinking The Bead - Modern Steelhead Tactics With Lightning Eggs
2:00 PM Jared Cady Float Fishing For Steelhead

THURSDAY

2:00 PM Robert Kratzer Steelhead And Rubber Worms

FRIDAY

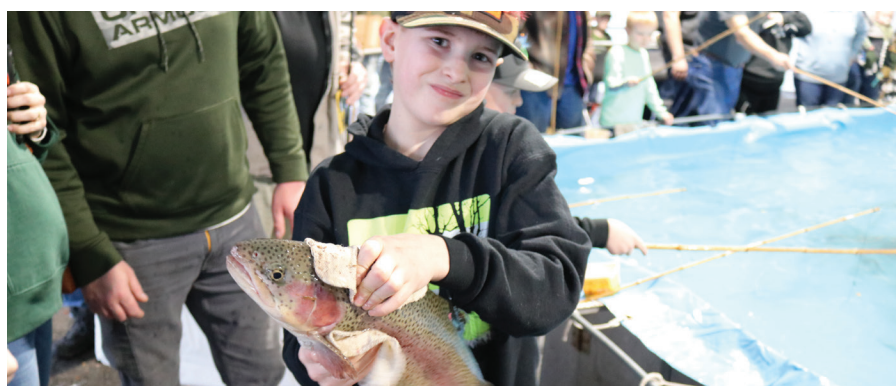
12:00 PM Jarod Higginbotham Bank Tactics For Steelhead 201
2:00 PM Brianna Bruce Hidden Steelhead Techniques
4:00 PM James Beasley Spinner Fishing For Steelhead

SATURDAY

12:00 PM Duane Inglin Drift Fishing vs Bobber Doggin'...Know The Difference
2:00 PM Jared Cady Bobber And Jig Fishing For Steelhead
4:00 PM Randall Bonner Bead Fishing For Steelhead

SUNDAY

11:00 AM Oros Rethinking The Bead - Modern Steelhead Tactics With Lightning Eggs
1:00 PM Bill Herzog Twitching For Trout



FREE

Tires LES SCHWAB

KID'S TROUT POND



The **Wall of Kings** is one of the most impressive trophy displays to be found anywhere on the planet! It's a collection of trophy mounts that will amaze any deer or elk hunter. It's truly a collection of some incredibly impressive and beautiful animals. And appropriately, you'll find it close to the Head & Horns Competition.

PRODUCT CATEGORY LIST

AFRICAN SAFARIS/HUNTS
BRIAN SUDDABY SAFARIS AFRICA354
DINKWE SAFARIS.....552
EAST CAPE SAFARIS1071
FW SAFARIS1009
HOTFIRE HUNTING & FISHING SAFARIS1064
ILIWA SAFARIS1039
JPH - JOUBERT PRO HUNT363
LATEGAN SAFARIS614
ROSEDALE SAFARIS1031
RUSS FIELD SAFARIS402
SAFARI LAND HUNTING OUTFITTERS947
TSOKO HUNTING SAFARIS908
AFTERMARKET ACCESSORIES
365 PATIO FURNITURE910
EXTREME SPORTSMAN TRAILERS.....1001
MULE EXPEDITION OUTFITTERS145
PNW SYNTHETICS307
ALASKA FISHING - S.E.
CAST ALASKA CHARTERS AND LODGE500
DALL BAY LODGE.....1018
DOC WARNERS ALASKA FISHING.....906
EAGLE CHARTERS.....561
FISH BARANOF.....360
FISH YAKUTAT, LLC.....1069
GLACIER BEAR LODGE.....207
ISLAND POINT LODGE.....422
MAJESTIC EAGLE LODGE.....413
MIDDLE ISLAND LODGE.....1040
ROCKY POINT RESORT371
WATERS EDGE LODGE560
YES BAY LODGE946
ALASKA FISHING - W.
ALASKA KINGFISHERS526
BECHAROF LODGE FISHING.....518
TOGIAC RIVER LODGE616
ALASKA HUNTING
ALASKA YACHT EXPEDITIONS931
C&M MARINE INC.....953
WILLOW AIR.....1057
ALBERTA HUNTING/FISHING
ALBERTA BOREAL OUTFITTING.....1020
UDELL'S GUIDING & OUTFITTING1038
APPAREL
ADDICTED FISHING.....467
GRUNDÉNS660
KILLER TENDENCIES LLC357
OUTDOOR EMPORIUM.....870
SPIKA USA956
SPORTCO WAREHOUSE.....700, 807
THE BLACKTAIL COMPANY521
THE FUKERY.....1025
ZEROFIT USA400
ARCHERY
DAVE'S SPORT SHOP590, 3D ARCHERY
IRON WILL OUTFITTERS.....1019
SKOOKUM ARCHERS CLUB AND RANGE.....300, 3D ARCHERY
ART/HOME DECOR
DAVE BARTHOLET WILDLIFE1002S
HUNT N HONEY548
IMAGeworks350
PUDDING RIVER WOOD CARVING STUDIO.....644
STEEL AND STONE1086
SWEETWATER TINY STRUCTURES.....450
ASSN/NON PROFIT/GOVT AGENCY
CEDAR RIVER BOWMEN1015
DELTA WATERFOWL1029
DUCKS UNLIMITED WASHINGTON STATE.....646
GERMAN SHORTHAIRED POINTER CLUB OF WA1081
HEROES ON THE WATER NWEST CHAPTER.....1062
MILITARY ORDER OF THE PURPLE HEART CHPT. 72.....206
MULE DEER FOUNDATION458
NISQUALLY RIVER NWTf NATIONAL WILD TURKEY FEDERATION.....1074
PACIFIC NORTHWEST GORDON SETTER CLUB.....1088
PACIFIC STATES MARINE FISHERIES COMMISSION.....549
PHEASANTS FOREVER1047
PIERCE COUNTY SHERIFF'S DEPARTMENT973

PSLRA PUGET SOUND LABRADOR RETRIEVER ASSOCIATION1087
PSRFE PUGET SOUND RECREATIONAL FISHERIES ENHANCEMENT.....519
PUGET SOUND ANGLERS STATE BOARD419
RMEF ROCKY MOUNTAIN ELK FOUNDATION1032
RODS AND REELS IN NEED.....1012
SAFARI CLUB INTERNATIONAL1095
SEATTLE-TACOMA GERMAN WIREHAIRRED POINTER CLUB.....1090
SKOOKUM ARCHERS CLUB AND RANGE.....975, SA
SOUTH SOUND BIRD DOG CLUB.....1089
THE FALLEN OUTDOORS - TEAM WA1034
THE BLACKTAIL COACH.....1050
THE GIVING HUNT.....712
TOTEM YACHT CLUB426
TRADITIONAL BOWHUNTERS OF WASHINGTON974
USCG - U.S. COAST GUARD RECRUITING OFFICE
TUKWILA WA RECRUITING.....564
VETERANS OF FOREIGN WARS DEPT OF WASHINGTON164
WASHINGTON DEPARTMENT OF FISH AND WILDLIFE550
WASHINGTON STATE BASS FEDERATION559
WASHINGTON STATE YOUTH CONSERVATION CAMPS1083
WASHINGTON WATERFOWL ASSOCIATION.....713
WASHINGTONIANS FOR WILDLIFE CONSERVATION368
WESTERN WASHINGTON WALLEYE CLUB444
WSMA WA STATE MUZZLELOADER'S ASSOCIATION1077
ATVS/UTV
GOODFELLA'S POWERSPORTS159
BC HUNTING
BC GUIDE OUTFITTERS.....554
BOWRON RIVER GUIDING1011
NADINA GUIDE OUTFITTERS LTD.304
PURE PASSION OUTFITTING714
RIVAL OUTFITTING LTD.902
TX OUTFITTERS1061
WOLVERINE RANGE OUTFITTERS LTD.....345
BBQS/GRILLS
CASCADIA BBQ SUPPLY407
BC FISHING
BARKLEY SOUND LODGE1066
BROWN'S BAY RESORT1051
CRITTER COVE MARINE GROUP INC.....406
HOOK'N THEM UP FISHING CHARTERS.....171
JOE'S SALMON LODGE952
LEISURE SUIT CHARTERS.....919
NOOTKA MARINE ADVENTURES1004
QUALICUM RIVERS SALMON FISHING RESORT1030
QUEEN CHARLOTTE LODGE.....348
REEL APPEAL OCEAN FRONT RESORT LTD.....620
REEL OBSESSIONS SPORT FISHING.....356
WINTER HARBOUR OCEAN ADVENTURES INC.....219
BOATS
ALUMAWELD BOATS INC.650, 652
BIG SALMON RESORT/FATHER&SON OUTDOORS.....420
CLACKACRAFT RIVER BOATS147
DEFIANCE MARINE.....135, 130
GR8 OUTDOORS105, 100
OFFSHORE SOLUTIONS/JOHNSON CHAMBERED BOATS1302
PUGET MARINA1306, 1305
SALISH BOAT COMPANY1310
SEA MARINE/WESTSIDE MARINE.....1320
TACOMA BOAT SALES & SERVICE643
VAUGHN BAY CUSTOMS1300, 1301
VERLE'S SPORTS CENTER & MARINE640, 840, 841, FD4
WHO DAT TOWERS.....417
WOOLDRIDGE BOATS INC.654
BOAT TRAILERS
TACOMA BOAT SALES & SERVICE643
CANADA HUNTING
PURE PASSION OUTFITTING714
CALLS
FANTOM GAME CALLS154
PACIFIC CUSTOM CALLS LLC925
TOXIC CALLS1022
CAMPERS
MAMMOTH OVERLAND22
TUNE OUTDOOR156
CAMPING
IKAMPER USA INC.....1093
INDUSTRIAL REVOLUTION1097
ROGUE LIMITEDFD-3

CARS/TRUCKS/MOTORCYCLES
WESTERN WASHINGTON TOYOTA DEALERS.....440
DOG KENNELS/TRAINING
GERMAN SHORTHAIRED POINTER CLUB OF WA.....1081
QUICKSILVER KENNELS.....1056
EDUCATIONAL
CHIRO ONE WELLNESS1014
KING LASIK | K2 VISIONTB16
NRA NATIONAL RIFLE ASSOCIATION / SHOWS & EXHIBITS DEPT.410
THE BLACKTAIL COACH.....1050
ELECTRONICS
FISH WASHINGTON LLC DBA CATCH ZONE403
INVISAGIG.....424
STAR-BATT.....1053
FIREARMS
RUGER FIREARMS.....HEAD & HORNS
FISHING PRODUCTS
1STGENFISHING706, 764
ACTIVE OUTDOORS706, 764
ANGL-RITE.....1079
BATSON ENTERPRISES.....143
BECKMAN NETS.....706, 764
BNR BAITS706, 764
BRAD'S KILLER FISHING GEAR & MAC PROP SAVERS.....600
BUCKETCO™370
CARA'S CORNER COUNTRY STORE.....445
CAL MARINE FISH COMPANY218
CANNON DOWNRIGGERS506
CRUSTACEAN SENSATION BAITING PRODUCTS456
EDGE RODS256
FISHERMAN'S GOLD509
GAMAKATSU USA, INC.....508
GRUNDÉNS660
HUMMINGBIRD ELECTRONICS.....506
LAMIGLAS INC.....601
LESTER'S AMERICAN MADE MARINE GEAR556
MACK'S LURE.....565
MINN-KOTA506
MUSTAD FISHING AMERICA.....763
OKUMA706, 764
OUTDOOR EMPORIUM.....863, 870
OWNER HOOKS706, 764
PAUTZKE BAITS706, 764
PRECISION FLY AND TACKLE305
P-LINE706, 764
PURE FISHING609
PUCCI706, 764
RUGGED MAPS1032
SAFE WADERS LLC.....502
SPORTCO WAREHOUSE.....807
TALON RODS463
TICA USA618
YAKIMA BAIT.....706, 764
FISHING TACKLE
ANTIQUE TACKLE COLLECTORSTB01
BEAUMAC ENTERPRISES606
CHROME JUNKIES301
EDGE RODS259
JEFF ROBLES AND ASSOCIATES.....609
JOE'S JIGS216
L H FRENCH CO.506
LITTLE CAPTAINS KOKANEE TACKLE408
MCOMIE'S CUSTOM LURES.....806
PRECISION FLY AND TACKLE305
PROLITE ROD TECHNOLOGY343
PRO-TROLL INC.....663
SCOTTY MANUFACTURING.....503
SEATTLE FISHING COMPANY.....267
STACKING BODIES CUSTOM446
TALON RODS463
TICA USA.....618
WESTCOAST FISHING TACKLE.....664
FLY FISHING PRODUCTS
OROS.....173
TICA USA.....618
FLY FISHING GUIDES
GET'M DRY FISHING COMPANY.....404
RED'S FLY SHOP.....812
TSOKO HUNTING SAFARIS908

FOOD/BEVERAGE	
AHTANUM BERRY PATCH & BAKERY.....	1007
BOB'S FREAKIN NUTS.....	1017
CAL MARINE FISH COMPANY.....	218
CAMANO ISLAND COFFEE ROASTERS.....	1046
CAMPFIRE FOODS NW.....	501
FIVE STAR PICKLES & SAUSAGE.....	971
GARLIC GOURMAY/GARLIC EXPRESSIONS.....	656
GHOST SCREAM HOT SAUCE.....	364, 365
GRIZZLY JOE'S SEASONING.....	1028
HERITAGE 1857 COFFEE.....	904
HONEYCOMB RAW HONEY.....	13
JUST A LITTLE NUTS.....	924
KENLEE JERKY.....	361
NATURE NATES.....	1024
NORTHWEST SPICES.....	1085
OMG OLIVE OILS & VINEGARS.....	167
PUYALLUP CHOCOLATES.....	152
SMITH BROTHERS.....	625
SQUATCH JUICE LLC.....	411
THE SWEETEST THINGS.....	545
UNCLE JIM'S SMOKEHOUSE INC.....	757
ZOMBIE IRON.....	457
FOOTWEAR	
ADVANCE TECH ORTHOTICS.....	517
DANNER INC. / LACROSSE FOOTWEAR.....	453
GRUNDÉNS.....	660
OUTDOOR EMPORIUM.....	863, 870
HUNTING PRODUCTS	
IRON WILL OUTFITTERS.....	1019
KOVIX.....	934
LEUPOLD & STEVENS INSTRUMENTS INC.....	759
NORTHWEST SHIRT AND SPORTS.....	936
NW MOUNTAIN CHALLENGE.....	461
OUTDOOR EMPORIUM.....	863, 870
ROGUE LIMITED.....	FD-3
RUGGED MAPS.....	1037
SPORTCO WAREHOUSE.....	700, 807
SPOT LLC.....	1016
TACRIG.....	201
THE BLACKTAIL COACH.....	1050
HUNTING GEAR AND EQUIPMENT	
AXIL.....	945
BULL'S EYE INDOOR RANGE.....	901, 905
INFINITE PRODUCT SOLUTIONS.....	367
NILCH'I.COM.....	949
OLD SCHOOL GUN SCHOOL.....	168
SILENCER CENTRAL.....	1054
TACRIG.....	201
WARNE MANUFACTURING COMPANY.....	563
IDAHO HUNTING	
IDAHO ELK OUTFITTERS.....	263
MAMMOTH OUTFITTERS.....	1052
INSURANCE/FINANCIAL	
EDWARD JONES.....	1070
GLOBAL CREDIT UNION.....	756
PROGRESSIVE INSURANCE.....	253
INTERNATIONAL FISHING	
REEL TIME FISHING.....	928
INTERNATIONAL HUNTING	
CRIMSON RIDGE OUTFITTERS.....	1078
WILD TV INC.....	1021
METANOIA VENTURES.....	1084
JEWELRY	
WILDERNESS MINT.....	203
KNIVES/SHARPENERS	
AMERICAN DELTA PRODUCTS / HUNTER HONER.....	459
BENCHMARK KNIFE OF OREGON CITY.....	700, 807
CUTCO CUTLERY.....	512
ELYSIAN EDGE CO.....	1041
GRIZZLY KNIVES.....	954
MOR JERKY AND MORE.....	1058
OUTDOOR EMPORIUM.....	863, 870
RANGER SALES.....	954
SNIPER BLADEWORKS.....	954
SPORTCO WAREHOUSE.....	700, 807
TEXAN KNIVES.....	611
LOG HOMES/FURNITURE	
GOLD VALLEY LOG HOMES.....	1044

MARINE ACCESSORIES	
FISH ON SPORTS.....	527
HAXTON'S CANVAS & UPHOLSTERY LLC.....	543
TACOMA BOAT SALES & SERVICE.....	643
WEEKEND SAVER.....	546
MARINE SERVICE/MARINAS	
TACOMA BOAT SALES & SERVICE.....	643
LES SCHWAB TIRE CENTERS.....	TROUT POND
MEDIA	
ADDICTED FISHING.....	467
FISH HUNT NORTHWEST.....	567
NORTHWEST FISHING / COHO MEDIA.....	251
NORTHWEST SPORTSMAN MAGAZINE.....	352
NORTHWESTERN OUTDOORS RADIO.....	358
PNWILD.....	932
MEXICO FISHING	
BAJA PIRATES.....	416
BAJA RANCHEROS OF LA PAZ.....	1010
JW WORLD.....	427, 814
VILLA DEL PALMAR.....	369
MONTANA HUNTING	
5/S OUTFITTING.....	514
NEW ZEALAND	
KAWEKA HUNTING ADVENTURES.....	401
LOCHINVAR SAFARIS NEW ZEALAND.....	951
OPTICS	
KAPTURE.....	1045
LEUPOLD & STEVENS INSTRUMENTS INC.....	759
MAVEN.....	448
OSPREY GLOBAL SCOPES.....	1067
TRACT OPTICS.....	1043
OREGON FISHING - LOWER COLUMBIA	
TWISTED WATERS GUIDE SERVICE.....	604
OREGON FISHING	
ADDICTED FISHING.....	467
FISHING WITH BIG MIKE.....	1035
PATHFINDER SPORT FISHING.....	1080
PACKS/BAGS	
WESTERN CASE.....	151
PADDLE SPORTS	
TURMANATOR TRAILER & IRONWORKS.....	13
PET SUPPLIES	
WILCO FARM STORE.....	1049
RESORTS/DESTINATIONS	
NESKOWIN CREEK RV RESORT / SPR OF OREGON.....	622
ROD MANUFACTURES	
EDGE RODS.....	259, 256
PRECISION FLY AND TACKLE.....	305
STRYKER RODS.....	256, 259
TALON.....	463
TICA USA.....	618
WESTERN FILAMENT.....	603
RVS	
APACHE CAMPING CENTER.....	8
SOUTH HILL RV SALES INC.....	15
VALLEY RV SUPERCENTER.....	2
RV SERVICE/REPAIR	
GENESIS AUTOMOTIVE AND RV REPAIR, INC.....	172
SAFES	
FORT KNOX SAFES.....	HEAD & HORNS
NORTHWEST SAFE.....	148
OUTDOOR EMPORIUM.....	863, 870
SPORTCO WAREHOUSE.....	700, 807
SHELTERS/STORAGE SYSTEMS	
ALL-STOR BUILDINGS.....	14
IBEX ROOF LLC.....	758
NORTHWEST POLE STRUCTURES.....	619
WEB STEEL BUILDINGS NORTHWEST, LLC.....	520
SPECIALTY GIFTS	
365 PATIO FURNITURE.....	910
BLAZE.....	306
CARA'S CORNER COUNTRY STORE.....	445
CASCADE CUSTOM CREATIONS.....	1027
COUNTRY CORNER MARKET - EVERWOOD FURNISHINGS.....	12
FROZEN CRITTERS.....	1098
HAWAIIAN MOON.....	351
HOMECO SALES LLC.....	205, 1065

JLB INVESTMENTS - STREAMING BOX PROS.....	153
LEAFFILTER NORTH LLC.....	1075
LIGHTHOUSE CAVALCADE.....	655
MAGIC MASSEUSE.....	425
METOLIUS HEMP CO.....	621
OFF THE WALL BEAUTY PRODUCTS.....	909
OUTDOOR EMPORIUM.....	863, 870
PNW INTERNATIONAL INC.....	163
PNW LIFESTYLE.....	903
RICK OLSON HEALTH.....	418
ROGUE LIMITED.....	FD-3
SCENTRAX.....	445
SNAP IT HOT.....	269
STAR BLINK PRODUCTS INC.....	657
TEAM ROOFING NW.....	938
SPORTING GOODS	
DAVE'S SPORTS SHOP.....	1002, 3D ARCHERY
GRUNDÉNS.....	660
PRECISION FLY AND TACKLE.....	305
OUTDOOR EMPORIUM.....	863
SPORTCO WAREHOUSE.....	700
SUNGLASSES	
THE SUNGLASS GUY INC.....	165
SURVIVAL/FIRST AID PRODUCTS	
EMERGENCY RESPONSE INTERNATIONAL/BRETT STOFFEL.....	440
HEAT IT US LLC.....	409
TAXIDERMY	
FROZEN CRITTERS.....	1098
TRAPLINE TAXIDERMY.....	612
TIRES	
LES SCHWAB TIRE CENTERS.....	TROUT POND
TRAVEL/TOURISM	
BEAR PAW CHARTERS LLC.....	558
CONCONULLY CHAMBER OF COMMERCE.....	553
INLAND NORTHWEST WILDLIFE COUNCIL.....	
JW WORLD RESOURCES.....	814, 369, 427
WINNING WAYS LLC.....	1082
TRUCKS/CARS/MOTORCYCLES	
WESTERN WASHINGTON TOYOTA DEALERS.....	440
TOOLS/EQUIPMENT	
BEST SEEDLING LLC.....	142
TRAILERS	
TRAILER BOSS.....	5
UPLAND BIRD HUNTING	
DOUBLE BARREL UPLAND BIRD RANCH.....	265
US HUNTING	
ZERO GUIDE FEES.....	921
WALL TENTS/STOVES	
BRAVO MANUFACTURING INC.....	1099
NORTHWEST TENT COMPANY, LLC.....	939
WASHINGTON FISHING - EASTERN	
FISH INTIMIDATORS LLC.....	900
WASHINGTON HUNTING	
EARLY WINTERS.....	1073
ELK JUNCTION OUTFITTERS GUIDING.....	1060
OKANOGAN VALLEY GUIDE SERVICE.....	1006
WASHINGTON FISHING	
ADDICTED FISHING.....	467
ANGLER'S GUIDE SERVICE.....	524
FREEDOM CHARTERS.....	1076
OUTLANDER CHARTERS.....	624
PACIFIC FIN CHARTERS.....	571
RIDGE TO RIVER OUTDOORS LLC.....	443
WASHINGTON FISHING - N.W. SALTWATER	
HUNTFISHPNW.....	658
JOHN THOMAS ADVENTURES.....	452
RODFATHER CHARTERS.....	1042
SEAWALKER CHARTERS.....	460
SOUND TO SEA CHARTERS.....	359
WASHINGTON FISHING - S.W. SALTWATER	
FISH NEAH BAY.....	175
PACIFIC SALMON CHARTERS.....	516
WATERFOWL GUIDE/PRODUCTS	
FAMILY HUNTING CLUB.....	1036
SKONE RANCH OUTFITTERS.....	930

The category list is subject to change. Every effort has been made to ensure accuracy until and through press time. Last-minute changes or additions are at the show office. Show admission refunds will not be granted due to a change in listing.



ABSOLUTE PRECISION

It only takes one—one that does it all. The new VX-5HD Gen 2 features our Professional-Grade Optical System and delivers the repeatable accuracy and precision serious hunters demand.

VX-5HD
GEN 2



SPEEDSET™
ELEVATION DIAL

INTEGRATED
THROW LEVER

PROFESSIONAL-GRADE
OPTICAL SYSTEM

ILLUMINATED RETICLES WITH
MOTION SENSOR TECHNOLOGY (MST™)

BE RELENTLESS®