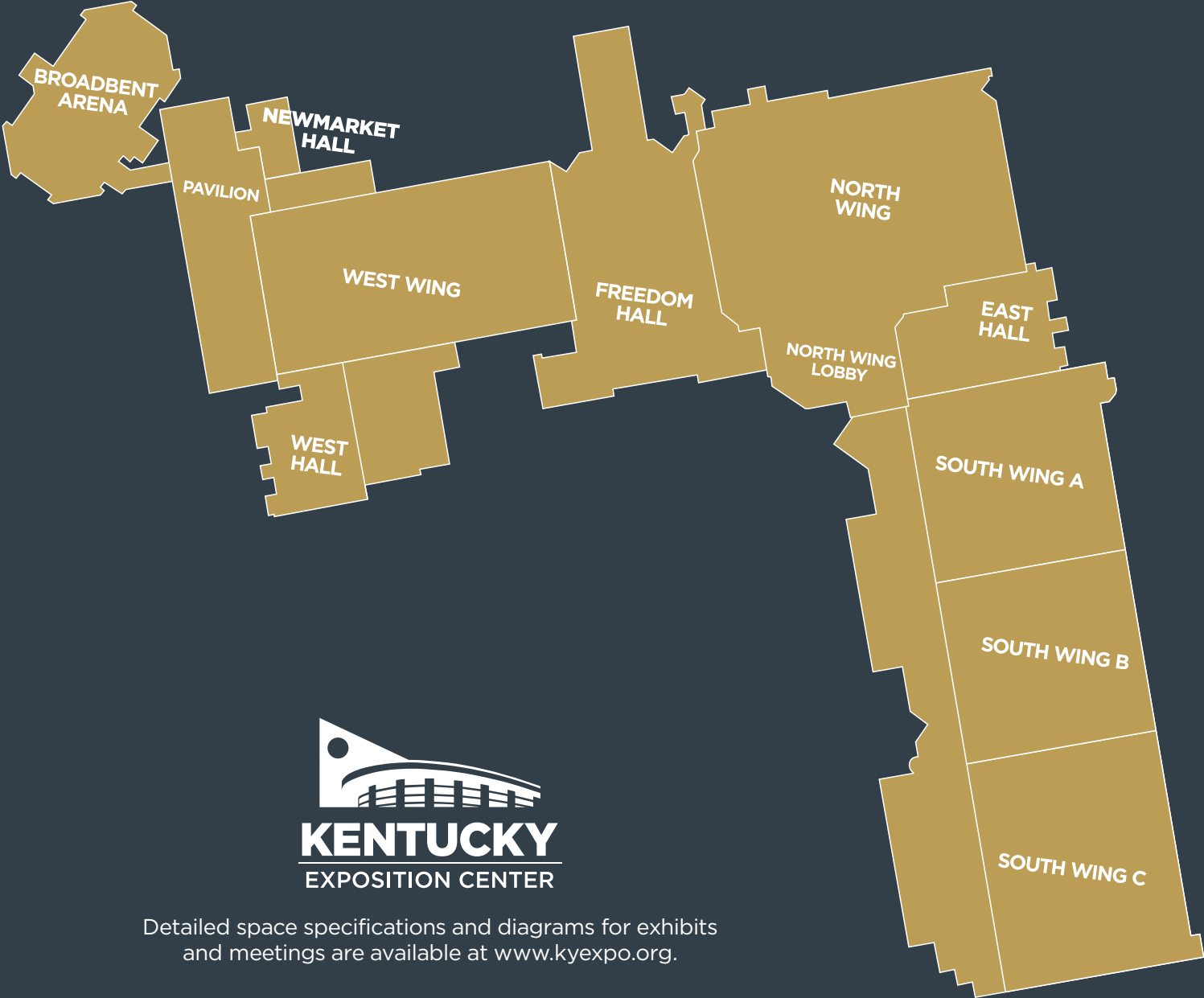
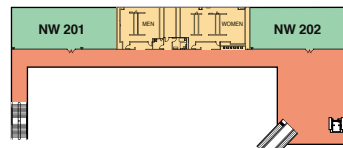
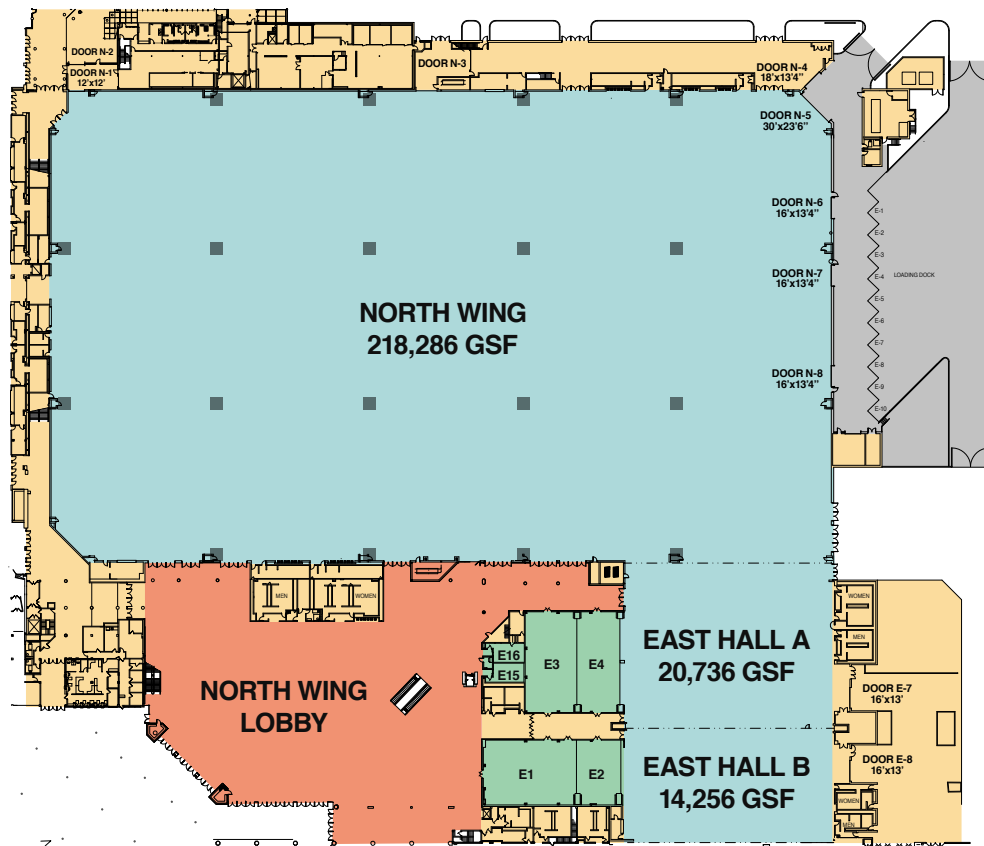


KENTUCKY EXPOSITION CENTER FACILITY LAYOUT



Detailed space specifications and diagrams for exhibits and meetings are available at www.kyexpo.org.



**NORTH WING LOBBY
SECOND FLOOR**

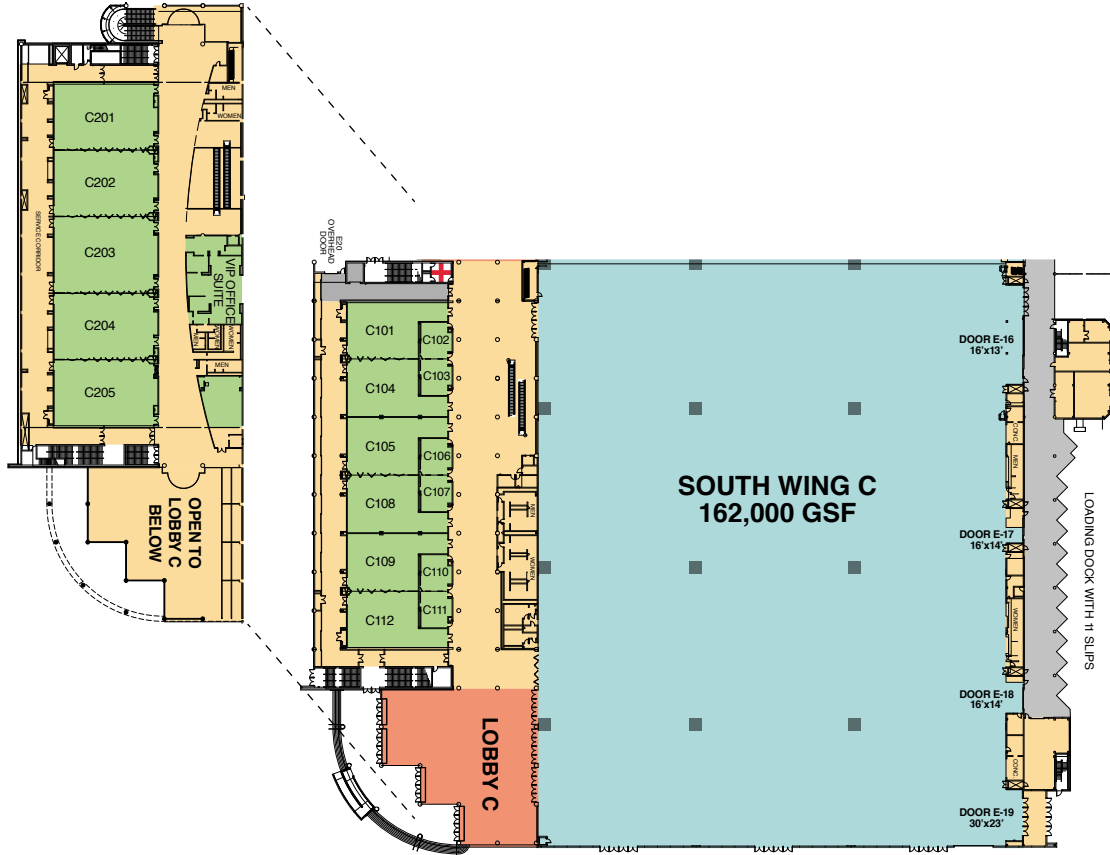
EAST HALL	Total Square Feet	Ceiling Height	Theater	Classroom	Banquet	10' x 10' Booths
East Hall 1	3,552	16'	428	200	160	20
East Hall 2	1,632	16'	163	76	64	10
East Hall 3	2,964	16'	306	160	112	14
East Hall 4	2,964	16'	233	120	112	14
East Hall 1-2	5,184	16'	670	308	248	30
East Hall 3-4	5,928	16'	631	304	272	28
East Hall A	20,736	23'	3042	1,280	1,232	98
East Hall B	14,256	23'	2106	1,232	784	75
East Hall A-B	34,992	23'	5304	2,304	2,128	75

NORTH WING	Total Square Feet	Ceiling Height	Theater	Classroom	Banquet	10' x 10' Booths
North Wing	218,286	15' to 28'	5,400	NA	NA	1,205
NW 201	1,680	X'	240	X	X	X
NW 202	1,890	X'	270	X	X	X



SOUTH WING A & B	Total Square Feet	Ceiling Height	Theater	Classroom	Banquet	10' x 10' Booths
SW A	129,600	27'	— Contact KEC for details —			700
SW B	129,600	27'	— Contact KEC for details —			700
SW A-B	259,200	27'	— Contact KEC for details —			1,400
SW A Lobby	23,800	64' max	— Contact KEC for details —			NA
SW B Lobby	13,500	52' max	— Contact KEC for details —			NA
SW B 100	696	14'	55	24	32	NA
SW B 101	5,040	21'	650	252	264	NA
SW B 102	5,040	21'	650	252	264	NA
SW B 103	5,040	21'	650	252	264	NA
SW B 104	5,040	21'	650	252	264	NA
SW B 105	5,040	21'	650	252	264	NA
SW B 106	696	14'	60	24	32	NA
SW B 107	625	9'4"	45	24	32	NA
SW B 108	750	9'4"	60	24	32	NA
SW B 109	750	9'4"	60	24	32	NA
SW B 110	750	9'4"	60	24	32	NA
SW B 101-105	25,200	21'	3250	1,604	1,432	NA
SW B 107-108	1,375	9'4"	105	72	72	NA
SW B 107-110	2,875	9'4"	225	144	168	NA
SW B 109-110	1,500	9'4"	120	72	72	NA

**SOUTH WING C
MEZZANINE**



SOUTH WING C	Total Square Feet	Ceiling Height	Theater	Classroom	Banquet	10' x 10' Booths
SW C	162,000	27'	— Contact KEC for details —	—	—	875
SW C Lobby	13,423	58' max	— Contact KEC for details —	—	—	NA
SW A-B-C	421,200	27'	— Contact KEC for details —	—	—	2,275
SWC 101	2,420	16'	280	128	112	NA
SWC 102	560	12'	42	16	24	NA
SWC 103	560	12'	42	16	24	NA
SWC 104	2,420	16'	280	128	112	NA
SWC 105	2,420	16'	280	128	112	NA
SWC 106	560	12'	42	16	24	NA
SWC 107	560	12'	42	16	24	NA
SWC 108	2,420	16'	280	128	112	NA
SWC 109	2,420	16'	280	128	112	NA
SWC 110	560	12'	42	16	24	NA
SWC 111	560	12'	42	16	24	NA
SWC 112	2,365	16'	280	128	112	NA
SWC 101-104	4,840	16'	546	252	224	NA
SWC 102-103	1,120	12'	124	56	56	NA
SWC 105-108	4,840	16'	546	252	224	NA
SWC 106-107	1,120	12'	124	48	56	NA
SWC 109-112	4,840	16'	546	252	224	NA
SWC 110-111	1,120	12'	124	48	56	NA
SWC 201	3,927	21'	575	252	192	NA
SWC 202	4,004	21'	575	252	192	NA
SWC 203	4,620	21'	598	280	240	NA
SWC 204	4,004	21'	575	252	192	NA
SWC 205	3,927	21'	575	252	192	NA
SWC 201-205	20,482	21'	3109	1,344	1,152	NA



937 Phillips Lane • Louisville, KY 40209
1-800-618-5151 • www.kyexpo.org